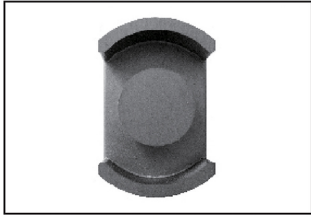
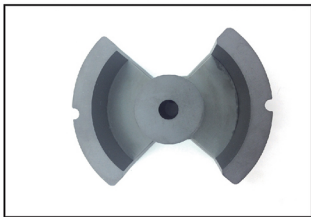


DS CORE

TYPE	FIG.	Dimensions(mm)					
		A	B	C	D	E	F
DS2311	1	23.5±0.5	5.5±0.2	15.3±0.3	19.1±0.5	9.7±0.2	4.1±0.2
DS3119	1	30.7±0.5	9.5±0.2	20.3±0.3	25.5min	13.2±0.25	6.6±0.2
DS3019	1	30.5±0.5	9.4±0.25	20.25±0.35	25.0min	13.2±0.3	6.6±0.2
DS3119	1	31.0±0.6	9.4±0.25	20.25±0.35	25.0min	13.2±0.3	6.6±0.2
DS3319	1	33.8±0.6	9.4±0.25	24.0±0.3	27.7min	13.8±0.2	6.55±0.2
DS3412	1	34.0±0.6	6.0±0.25	24.2±0.4	27.85min	13.8±0.3	3.2±0.2
DS3419	1	34.0±0.6	9.6±0.25	24.2±0.4	27.85min	13.8±0.3	6.6±0.2
DS3424	1	34.0±0.6	12.0±0.25	24.2±0.4	27.85min	13.8±0.3	9.1±0.2
DS4025	1	39.8±0.6	12.8±0.25	28.3±0.4	32.7min	16.0±0.3	9.2±0.25
DS4027	1	40.0±0.5	13.5±0.2	28.3±0.4	32.7min	16.0±0.3	9.9±0.2

PM CORE

TYPE	FIG.	Dimensions(mm)					
		A	B	C(Ref)	D	E	F
PM50	1	49.15±0.85	19.4±0.15	36.6	19.7±0.3	39.65±0.65	13.4±0.3
PM62	1	61.0±1.0	24.35±0.15		25.1±0.4	48.8min	16.9±0.2
PM74	1	74.0±1.5	29.5±0.3		28.5±0.5	57min	20.55±0.25
PM87	1	87.0±2.5	35.0±0.4	67	31.0±0.7	66.5min	24.2±0.4
PM90	1	90.0±1.5/-0.5	83.0±0/-0.3		29.0±1.0/-0.5	72min	74.0±0/-0.3
PM114	1	114.0±2.25	46.5±0.5		43.0±0.7	88min	31.5±0.4

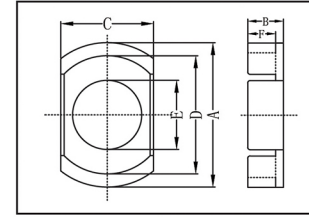
DS CORE

FIG.1

Cl (mm ³)	Ae (mm ²)	Le (mm)	Ve (mm ³)	AL±25%(nH/N ²)			Weight g/PRS
				FW40	FW44	FW95	
	56.50	29.70	1679	4500	4500		10.3
	127.00	49.10	6234	5000	5200		30
	125.00	49.10	6135	5000	5200		30
	129.00	49.10	6358	5000	5200		31
	149.60	50.60	7567.2	5200	5400		36
	147.10	38.40	5626	5800	6000		27.4
	154.80	51.20	7920	5000	5200		41
	153.50	60.20	9243.1	4500	4600		48.5
	211.40	65.80	13942	6000	6200		71
0.39	198.38	77.69	15411.75	6100	6300	8100	79.98

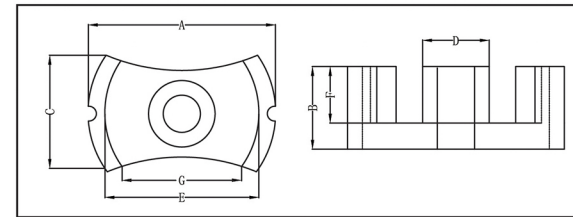


FIG.1

G	Cl (mm ³)	Ae (mm ²)	Le (mm)	Ve (mm ³)	AL±25%(nH/N ²)			Weight g/PRS
					FW40	FW44	FW95	
23.4min	0.227	370	84	31000	7700		140	
29min	0.204	490	100	68425	14680		328	
34min	0.162	790	128	101000	20000		470	
39.4min	0.161	910	146	133000	13000		820	
46min	0.558	627	350	339685	5206		1630	
52min	0.132	1428	198	425098	16000		2040	